

Josephson junction electric generator

António Saraiva – 2010-06-19
ajps2@hotmail.com

See Unified Absolute Relativity Theory at:

www.wbabin.net/saraiva/saraiva305.pdf
www.wbabin.net/saraiva/saraiva306.pdf
www.wbabin.net/saraiva/saraiva307.pdf
www.wbabin.net/saraiva/saraiva328.pdf
www.wbabin.net/stham/saraiva347.pdf

The Josephson junctions generate electricity from the sun's neutrinos.

Number of photons from the sun:

$$n = 3.5 \times 10^{21} \text{ m}^{-2} \text{ s}^{-1}$$

Energy and total energy:

$$E = 2\text{eV} \quad \Leftrightarrow \quad E_T = 7 \times 10^{21} \text{ eVm}^{-2} \text{ s}^{-1} \text{ ..(Intensity)}$$

It doesn't work with clouds or at night.

Number of neutrinos from the sun:

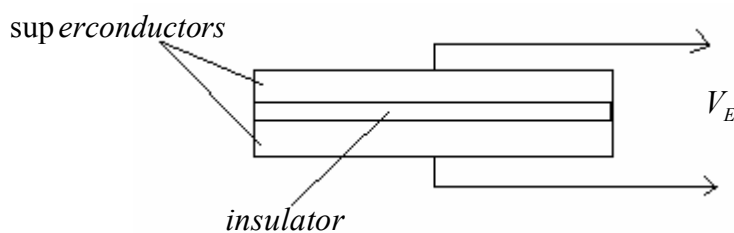
$$n = 4.8 \times 10^{14} \text{ m}^{-2} \text{ s}^{-1}$$

Energies:

$$E_0 = 1.2\text{eV} ; \quad E_K = 0.4\text{MeV} ; \quad E_T = 2 \times 10^{20} \text{ eVm}^{-2} \text{ s}^{-1}$$

Constant value day and night.

Neutrino electric cell:



Each cell detects the neutrinos that pass a area of one square meter.